

# V O T E R



A newsletter of the League of Women Voters of Indiana County, Pennsylvania

Volume XXVI Issue 32  
October 2005

LWVIC Board  
of Directors,  
2005-2006

Sherene Hess, President,  
724 465-2595

Nancy Fricke, V. President,  
724 465-5036

Sandy Whitson, Treasurer,  
724 463-7205

Ann Rea, Secretary,  
724 465-5796

Diane Duntley  
JoAnne Ferraro

Jane Lord

Beth Marshall

Olga Platt

Clarice Reber

Lori Rittle

Aida Shotts

**Next Board Meeting  
of LWVIC:**

**Tuesday, Oct. 11th  
12 noon at Diane  
Duntley's home  
204 Greenview Ct.  
724-349-2718  
Brown bag**

**All members and  
guests are welcome.**

## TOUR OF THE HOMER CITY STATION AS PART OF THE AIR QUALITY STUDY

**You are invited  
to join our tour of  
the EME Homer City  
Generating Station on  
Friday, Oct. 14, 2005  
From 1:30—3:30 p.m.**

Parking is available at the entrance. **Gary Cline, air quality specialist,** will greet us at the Guardhouse beginning at 1:15 p.m. Carpools will be formed at the Wayne Ave BiLo lot at 1 p.m.

### **Directions from Indiana:**

Proceed south on US route 119 through two stoplights and the town of Homer City. The first light is at a Citgo Accent Quickmart intersection and the second light is at the SR 56 East intersection. The station entrance is 2.9 miles past the second light and is marked with a sign "Power Plant Road" on the right. (*A Pacific Pride gas station will be on the left shortly before the turn to the right.*) Turn right onto Power Plant Road and bear left at the "T" and follow that road about 2 miles to the top of the hill and the station. Turn right at the 3-way intersection and stop at the Guardhouse.

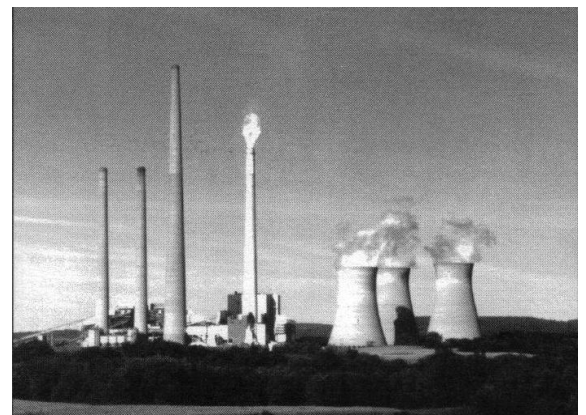
### **Reservations required for the tour:**

The names of all participants are to be provided in advance. We will be each be issued a badge. Please email Lori at [lrittle@yahoo.com](mailto:lrittle@yahoo.com) or call 724-465-6717 by **October 12th.**

Our tour will have two segments:  
—A **discussion session** on plant operations and environmental impact  
—A **station tour** of the plant production area including the boiler and the sulfur scrubber on Unit 3

Please review the information provided on the **enclosed information flyer** prior to the tour.

**Attire for visiting an industrial site.** Please wear comfortable footwear suitable for climbing stairs and walking on open grating. High heels and open toed shoes, such as sandals are not permitted in the production area. Jeans or dress slacks should be worn in lieu of skirts or loose fitting clothing. We will be asked to wear safety glasses and hearing protection which will be supplied.



## Fall Municipal Election Voter's Guides for Indiana County School Board Candidates Available Online

Voters elect county and local officials during the 2005 "off year" Election. Indiana County row office and the district justice candidates are running unopposed this fall.

Voters will be making important choices for school board candidates and in some local municipalities. Candidates for school boards throughout the county, including the recently opened two year term in Indiana School District have been invited to submit/revise responses to questions posed by the League for inclusion in the online Voter's Guides. District Justice responses from the spring primary are also available. Nancy Fricke is coordinating this effort. Check on [www.palwv.org/indiana](http://www.palwv.org/indiana) after Oct 14th.

**2005 Fall Voter Calendar  
Municipal Election**

Oct 11—Last day to register before Primary

Nov 1—Last day to apply for absentee ballots

Nov. 4—Date that absentee ballots must be returned

Nov. 8—**Municipal Election Day**  
**7 a.m.—8 p.m.**

Welcome to New League Member Karen Ross

**Vote Nov 8th** 



### Indiana LWV president presented with Anna Estes Strawbridge Honor Roll Award

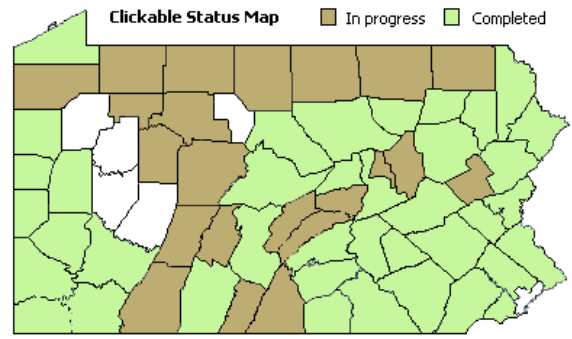
Sherene Hess' name will be added to a plaque in the Citizen Information Center in the LWVPA Harrisburg office as a tribute to her demonstrated energy and commitment to the ideals and principles of the League. Hess is beginning her third term as the Indiana County League president. She has been instrumental in bringing the organization into the electronic age with her support for a Web page and on online local voters guide. Hess also serves as the Project Director for the League's statewide Water Resources Education Network (WREN).

Lori Rittle, Aida Shotts, Sherene Hess, Nancy Fricke

## Indiana County Natural Heritage Inventory to be Initiated

The Indiana County commissioners adopted a proposal to create an inventory of animals, plants and other natural resources in the County in August. The Indiana County Natural Heritage Inventory will be conducted by Western Pennsylvania Conservancy over the next two years. The inventory will be funded primarily through the state Dept of Conservation and Natural Resources and is a prerequisite for many grant proposals. Indiana County was one of five remaining counties in the state waiting to adopt the program.

Participation in the Inventory is voluntary. The inventories contain information on the highest quality natural areas in each county and can be valuable tools for planning. They make general information available to plan for the protection and continued existence of rare plants, animals and other natural resources.



Western PA Conservancy Inventory Map  
<http://www.paconserve.org/rc/cnhi.html>

## Grant presented LWVIC Education Committee

Know someone who may be interested in membership? Let Olga Platt know at 724-465-2073 and she will send a brochure & short letter describing LWVIC's activities.

On September 28, Phi Delta Kappa Epsilon Pi Chapter of Indiana University of Pennsylvania presented to the LWVIC's Education Committee a grant to be used to further the work of PDK in support of public education. The LWVIC will use the \$1400 grant to coordinate and conduct workshops, public programs and other activities that will promote wider interest in public education. LWVIC will also use the funds to continue its advocacy for quality opportunities for children and youth at all levels. Sherene Hess accepted the grant on behalf of the LWVIC. She expressed gratitude to Diane Duntley who has for years served simultaneously on PDK and LWVIC boards and has been instrumental in building Partners Supporting Public Schools (PSPS), a consortium of groups including PDK, LWVIC, AAUW, NAACP and the Indiana Reading Council. Under Diane's leadership, PSPS held several events addressing important issues in public education, including cyber schools, early childhood education, public school funding equity, and the impacts of NCLB legislation on our county schools, proving to our local education professionals that there are groups who support their work and understand the enormous constraints under which the education community must operate.

Very recently, PDK National released this year's findings of the public's attitude toward public schools, and in particular the concerns about No Child Left Behind impacts. Americans accept the goals of NCLB, but reject the strategies. Read more of this interesting report at PDK's webpage:

[http://www.pdkintl.org/gallup/050823pr\\_gallup.pdf](http://www.pdkintl.org/gallup/050823pr_gallup.pdf)



### *School Bus Idling: The Risks*

Did you know? \*

- Children are at increased risk to exposure to diesel exhaust from School Buses?
- Their developing bodies are less capable of defending themselves against pollutants.
- Children typically have a faster metabolism and breathe at twice the rate of an adult, thereby receiving and retaining greater doses of pollution.
- Children tend to breathe through their mouths more bypassing the natural filtration protection of the nose.
- Children are typically shorter, making them closer to the ground where many pollutants collect. Diesel exhaust is believed to exacerbate asthmatic conditions.

\*Taken from Group Against Smog and Pollution, Inc, Wightman School Community Building, 5606 Solway St., #204, Pittsburgh, PA 15217 ([www.gasp-pgh.org](http://www.gasp-pgh.org))

### *Indiana County School District Idling Rule Policies*

Fortunately, some Indiana County School Districts have bus idling rules to combat unnecessary pollution and others are working on them. Here is data collected by phone calls to District Transportation Offices and Bus Companies. \*\*

1. Blairsville-Saltsburg (Smith Bus Company): Excellent policy requiring 3 second warm up in warm weather and no more than 5 minute warm up in >20 degree weather. The bus may be on no more than 2 minutes.
2. Homer Center: Smith Bus Company, Same as Blairsville-Saltsburg.
3. Indiana Area School District: No policy in place, but the buses "don't really sit around that long."
4. Marion Center School District: Fullington Auto Bus Company in Clearfield—"No law or rules."
5. Penns Manor School District: Talked to Carl Stall at the Bus Barn. They have no rule, but "tend to turn the engines off in good weather, but

let them run in cold weather to keep the buses warm."

6. Purchase Line School District: I spoke with Bob Koban at Tri County Transportation. They have no policy as of 8/23/05, but are implementing a policy very shortly.

7. United School District: They currently have a verbal agreement, but the new transportation officer is working on a written agreement.

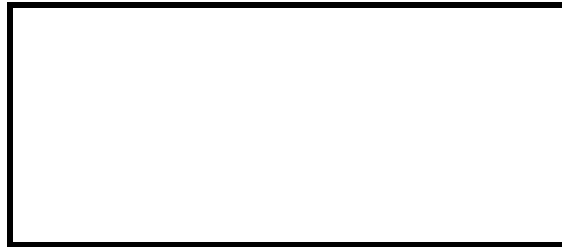
\*\* Any errors in reporting are the responsibility of Clarice Reber



A newsletter of the League of  
Women Voters of Indiana County,  
Pennsylvania  
PO Box 672  
Indiana, PA 15701

Phone: 724 465-2595  
Email: [lwwic@yourinter.net](mailto:lwwic@yourinter.net)

We're on the Web!  
[www.palwv.org/  
indiana](http://www.palwv.org/indiana)



**AMERICAN ASSOCIATION OF UNIVERSITY WOMEN**  
**SPONSORS**  
**INDIANA AREA SCHOOL BOARD CANDIDATES FORUM**  
**MODERATED BY THE LWVIC**  
**TUESDAY, NOVEMBER 1ST, 7- 9 P.M.**  
**AT THE INDIANA JUNIOR HIGH AUDITORIUM**  
**BROADCAST LIVE OVER WDAD AT 1450**

The seven candidates running for five open positions on the Indiana School Board have been invited to participate. The purpose of the forum is to educate citizens on the role of a school board member and to help Indiana area voters make informed decisions at the polls on November 8. The forum will be open to the public *and will be broadcast live on WDAD*.

Written and signed questions will be submitted by persons in the audience at the site *and by the radio listening audience*. Questions will be screened for appropriateness and general interest. No personal questions or questions directed to only one participant will be accepted. All candidates will have an opportunity to answer each question. There will be no cross-questioning by the candidates. Candidates will have 90 seconds to respond to each question, and two minutes to make a final statement at the close of the forum.

**Council of PTAs**  
**Sponsors**  
**Apollo-Ridge School**  
**Board Candidates Forum**  
**Moderated by LWVIC**  
**Wed. Oct 19th at 7 p.m**  
**Five candidates running**  
**for four seats.**

**Contact Aida Shotts at [SHOTTS@yourinter.net](mailto:SHOTTS@yourinter.net) or Sherene at [lwwic@yourinter.net](mailto:lwwic@yourinter.net) to volunteer assistance for either event.**

## HOMER CITY GENERATING STATION



EME HOMER CITY  
GENERATION LP

An EDISON INTERNATIONAL™ Company

<b>Address</b>	1750 Power Plant Road Homer City, PA 15748
<b>Site Description</b>	Located near Homer City, in Indiana County, Center Township. Occupying approximately 2,400 acres. The site also includes the 1,800 acre Two Lick Reservoir, a water conservation facility which is operated by the station.
<b>Phone Number</b>	724/479-9011
<b>Year Start-up</b>	Units 1 & 2 began operations in 1969; Unit 3 in 1977.
<b>Station Director</b>	Alfred Slowik
<b>Unit Output</b>	Unit 1 – 620 net MW Unit 2 – 614 net MW Unit 3 – <u>650 net MW</u> 1,884 total

The station operates as a merchant plant whose energy and capacity are sold primarily to customers in the Pennsylvania, Jersey and Maryland (PJM) Power Pool. The station can also provide power to the New York Power Pool. Homer City generates enough electricity at full load to meet the needs of about 2 million households.

**Workforce** Approximately 260 employees; 75% union.

**Environmental Commitment** Nitrogen oxide (NO<sub>x</sub>) and sulfur dioxide (SO<sub>2</sub>) emissions are well below current state and federal EPA limits.

The station invested more than \$270 million to significantly improve pollution controls. With the installation of three selective catalytic reduction systems, the station will achieve one of the lowest NO<sub>x</sub> emissions rates of any large coal-fired plant in the eastern U.S. A scrubber on Unit 3 is designed to reduce sulfur dioxide emissions by 98 percent.

The station currently is scheduled to meet new Pennsylvania Department of Environmental Protection Standards for NO<sub>x</sub> emissions ahead of deadline.

Homer City partners with the Pennsylvania Department of Environmental Protection to reduce acid mine drainage from closed coal mines and protect Two Lick Reservoir from any contaminants.

**Goods and Services  
Purchased in Local Area**

Approximately \$310 million.

**Community Involvement**

Member Indiana Chamber of Commerce, Pennsylvania Chamber of Business and Industry, Homer City Area Business Association. Annual employee pledge campaign and corporate contributions to United Way of Indiana County. Sponsor and/or financial supporter of: Indiana County YMCA , Homer-Center School District (Technology grant, gymnasium upgrades, athletic field), Special Olympics Village at the Indiana University of Pennsylvania campus, Indiana County Parks Rails to Trails projects, Community Living and Learning, Habitat for Humanity, Muscular Dystrophy, Salvation Army and the Presidential Freedom Scholarship Program Fund.

**Payroll and Benefits**

Approximately \$29 million annually.

**Operations**

Boiler water make up, condenser cooling water and potable water is taken from Two Lick Creek, processed through various pretreatment facilities, used and discharged through various environmental treatment facilities and returned to Two Lick Creek and Black Lick Creek.

**Fuel**

Bituminous coal is delivered to the Homer City Generating Station by truck. Units 1 and 2 burn a local Pennsylvania coal (that is cleaned on site in a coal cleaning plant) or a Western Pennsylvania Pittsburgh seam coal. The use of the washed coal and the Pittsburgh seam coal allows the units to meet the permitted sulfur dioxide emission limits. A flue-gas desulfurization unit (scrubber) was recently added to Unit 3 which allows the unit to burn local Pennsylvania coal.

**Homer City Generating Station**



**MIDWEST  
GENERATION**

*Committed to the community, the environment,  
and the safe, reliable generation of electricity.*